

HD Digital Video Player

**The world's smallest and most powerful
HD video player**

XP-10 User Manual



I. Introduction

XP-10 is a High Definition user-friendly digital media device used to display digital video with stereo sound on any HD monitor or TV via HDMI or component (YPbPr) output ports.

Video images are stored on either a USB flash drive or SD card. The XP-10 includes PC management software that allows you to organize your video playlists and copy to the storage device in seconds!

Digital media file compatibility:

- **Video file formats:** FLASH, MPEG1, MPEG2 MP@HL, MPEG4 SP/ASP, DIVX (HD 1080P), WMV9/VC-1, H.264 SP/MP/HP, H.263 BP, RM/RMVB V8/V9
- **Video file extensions:** MKV, AVI, TS, TP, MP4, M4V, MOV, V0B, PMP, MPG, M2TS, FLV, WMV, RM, RMVB

II. Specifications

Hardware specifications:

Dimensions: 2.5" x 2.4" x .5"

Weight: 1.8 oz.

Video output: CVBS, YPbPr

HDMI output: HDMI V1.2

Card reader: SD, SDHC (up to 8GB)

USB interface: USB 2.0

Power: 5v 1A

Playback features: Automatic video playback on power up.

File playback in alphabetical order.

Automatically resumes from stop position after power off.

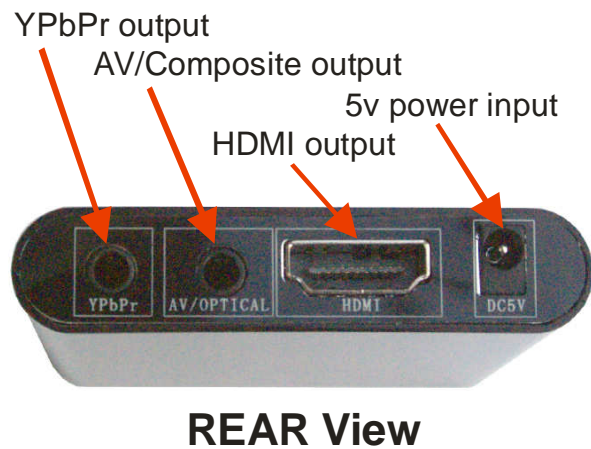
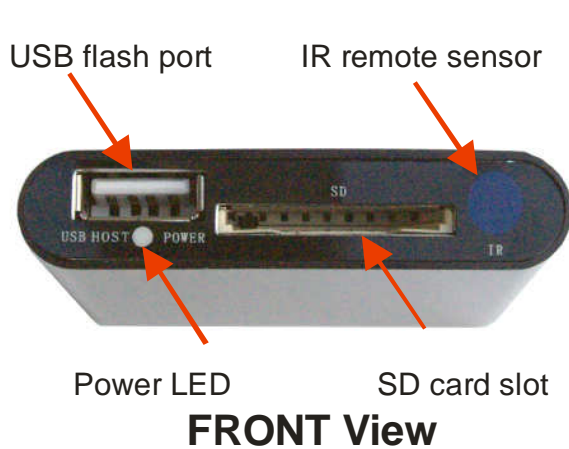
FREE software: PC based management tool to organize your playlist and one button copy to your storage device.

III. XP-10 Kit contents

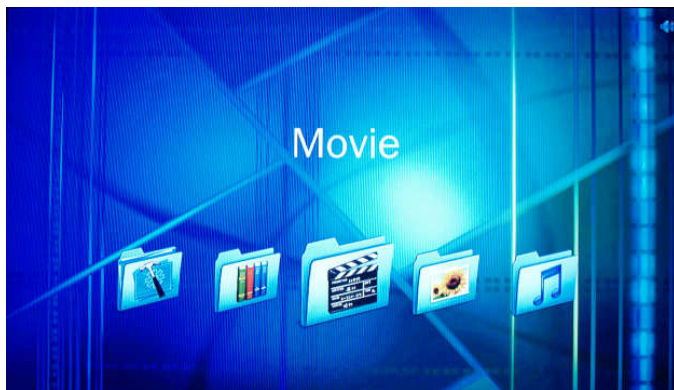


AC adapter, XP-10, remote control & AV/YPbPr cable


Installation



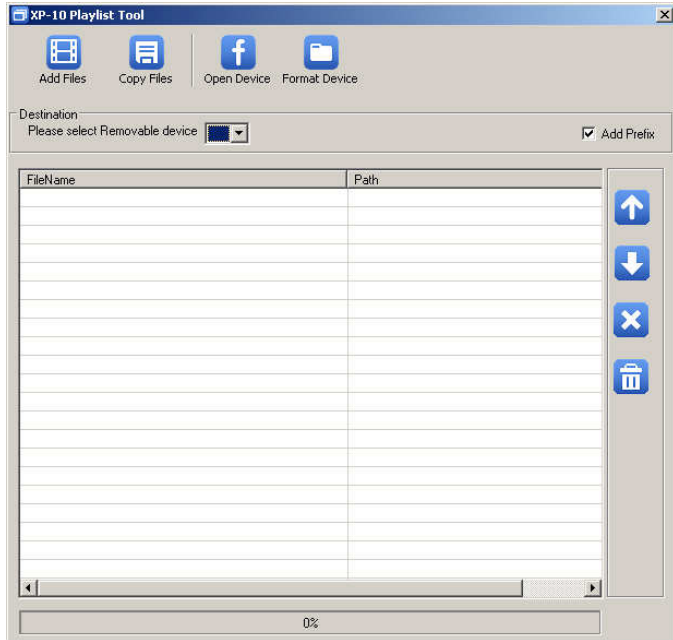
- 1- The XP-10 device should be mounted to allow line of sight between the remote control and the infrared sensor.
- 2- Plug in AC adapter and insert plug into 5v power input of XP-10
- 3- **CABLING:**
 - a. HDMI: Connect HDMI cable (not supplied) to HDMI output of XP-10 and HDMI input to TV.
 - b. Composite 480p: Connect AV cable to AV output of XP-10 and Video input to TV.
 - c. YPbPr 1080: Connect YPbPr cable (not supplied) to YPbPr output of XP-10 and YPbPr input to TV. Connect AV cable to AV output of XP-10 and audio input to audio input ports of the same YPbPr input of the TV. YELLOW = YELLOW, RED = RED and BLACK = WHITE
 - d. YPbPr without audio: Connect AV cable to YPbPr output of XP-10 and YPbPr input to TV. RED = RED, BLACK = BLUE and YELLOW = GREEN
- 4- Using the supplied playlist tool, create your playlist as instructed on the next page of this document and copy the files to your storage device (either USB flash or SD card).
- 5- Insert your storage device in either the USB flash port or SD card slot.
- 6- Point the remote control at the XP-10 and press the Power button. The Power LED should glow RED. If not press the Power button again. The XP-10 should automatically begin playing your video as defined by your playlist.











Operation

1. Download and install the file management tool on your PC. Software can be downloaded from the following link;
www.thesignagenetwork.com/documents/xp10.zip
- 2- After unzipping and storing the software on your computer, double click the XP10 ICON to open 

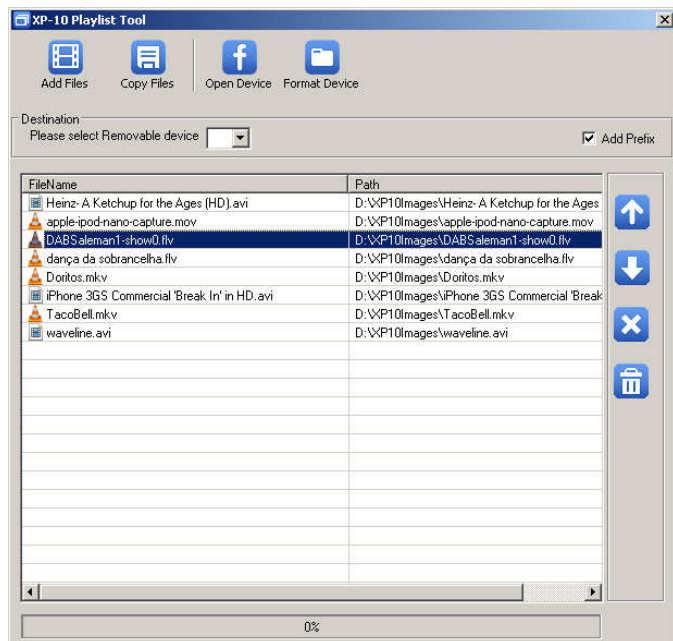
The following screen will appear



Button definition

-  Add Files Click to add files to you playlist
-  Copy Files Click to copy files to your storage device
-  Open Device Click to open your storage device
-  Format Device Click to delete all files from your storage device
-  Move the selected file UP in the playlist.
-  Move the selected file DOWN in the playlist.
-  Remove the selected file from the playlist
-  Remove ALL files from the playlist

Creating your playlist



- 7- Load your storage device:
 - a. Insert your UBS flash drive in an available UBS port of your computer.
 - b. Insert your SD card in your card reader.
- 8- Select your "Removable storage device" using the dropdown window.
- 9- Click the "**Open Device**" button to view the contents of the selected storage device. Click the "**Format Device**" button to delete **ALL** files from the selected storage device.
- 10- Click the "**Add Files**" button to locate and add video files to your playlist.
- 11- With the "**Add Prefix**" option checked, the video files will play in the order shown in the playlist. **NOTE:** If the "**Add Prefix**" option is NOT checked, the video files will play in alphabetical order.
- 12- To rearrange your list, select a file and use the UP or DOWN arrow buttons to move the file in the list.
- 13- Click the "**Copy Files**" button to copy your newly created playlist files to the selected storage device.
- 14- Do not remove the storage device until the "**Complete**" message is displayed in the progress bar at the bottom of the window.
- 15- When the copy progress has completed, remove the storage device from your computer and insert it into the XP-10 video player.
- 16- A RED light will appear below the USB port indicating the video player is on. If your device is not ON, use the Power button on the remote control to turn it on.