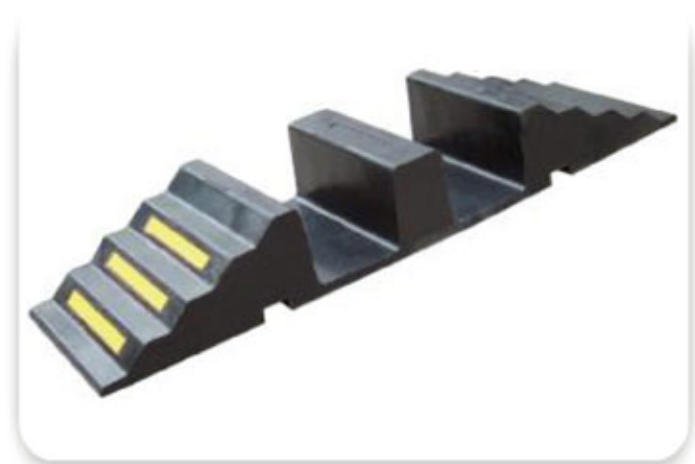


### Hose Ramp

*Hose Ramp is used for protecting hose and electric conduit runs with this effective, durable, long lasting product. Use to provide temporary or permanent hose and conduit runs from traffic. Also used to provide temporary ramp into driveways during construction along curbs. Lightweight and flexible, it conforms to contours of road surface. Economical and built to last, Enviroform hose ramps withstand*



Model No	Length	Width	Height	Channel	Weight	Color
DH-HR-3	850mm	300mm	85mm	90x75mm	12Kg	Black /Yellow
DH-HR-5	1010mm	300mm	135mm	150x120mm	22Kg	Black /Yellow

### Hose Bridge



Double Reflector: Sheet and Cat-Eye

Model No	Length	Width	Height	Channel	Weight	Color
DH-HCR-4	855mm	300mm	125mm	100x100mm	19Kg	Black /Yellow

